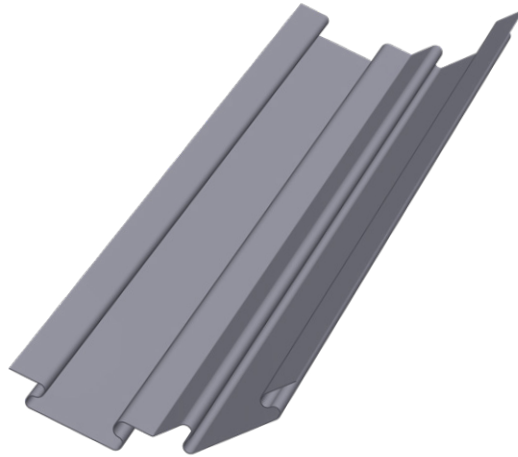




For use with double lap slate or plain tiles, the Heritage Dry Valley allows a traditional mitred finish to the valley without the need for soakers at every course.



### Product features & benefits

- Cost effective alternative to lead
- Lightweight, flexible, safe and easy to cut
- UV resistant

### Area of application

#### Suitable for:

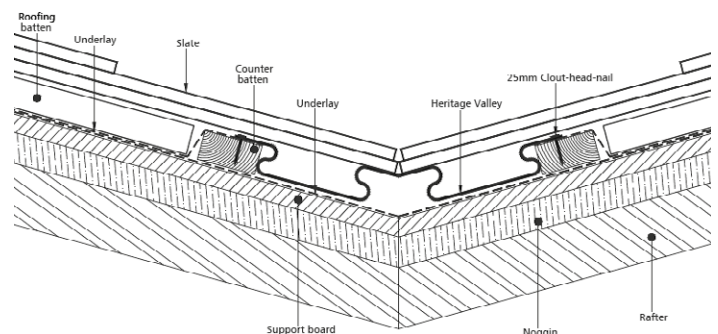
- 20° maximum pitch variance
- 17.5° minimum rafter pitch
- 60° maximum rafter pitch

The minimum pitch of the tile or slate should always be observed.

Product Code	KR966200
Material	Grey UV protected Glass Reinforced Polyester
Dimensions	3m long x 280mm wide x 1mm
Minimum pitch	17.5° minimum rafter pitch
Packaging	Banded in packs of 10 pcs 10 packs per pallet
Weight per pack	21kg
Regulations	Fire tested to comply with BS476: Part 3 SAB and Part 7 Class 3

### Installation

1. Install 6mm plywood boards on top of rafters or 12mm plywood boards between rafters to provide valley support.
  2. Fit support trays and a 1 m wide layer of roofing membrane down the valley ensuring that the membrane is not exposed at eaves.
  3. Lay a section of valley centrally on the valley board to mark the position of the support battens which the outer edges will be fixed to. The valley position should also be marked onto the fascia board as this area will need to be notched to accommodate the valley.
  4. Fix counter battens the same height as the tiling battens into the required position.
  5. Install the roofing membrane, dressing over the counter battens and install battens with ends meeting the counter battens on top of the valley board.
  6. The valley will need to be cut neatly at eaves where it meets the fascia board to ensure drainage into the guttering.
  7. Once in position the valley can be fixed into the counter battens using 25mm clout headed nails at 500mm centres.
  8. Further lengths can be accommodated by flexing the centre section of the upper valley over the upstand of the lower valley and pushing the side wings into the profile of the lower valley. Any overlap should be 150mm min measured vertically.
  9. A lead or Klobber lead alternative saddle detail should be formed at the top of any valley run providing the appropriate headlap.
  10. Tiles or slates should be cut to a neat mitre central to the valley with minimal gaps.
  11. Tile support or packing may be required to maintain an even finish with all small cuts being suitable secured.
- All details should be installed in accordance with BS 5534.



Liability: All descriptions of the goods in brochures, sales materials and the like (which shall not form part of the contract) are merely indicative of the nature of the goods. We reserve the right to alter the appearance or functionality of the materials or components of the goods provided always they do not differ from any expressly agreed specification. Any advice or suggestions made by us or on our behalf whether in brochures, technical literature or in response to a specific query as to the usability or suitability of the goods for a specific purpose is given in good faith on a goodwill basis only and on the basis of any information supplied by you. However, it remains your ultimate responsibility to ensure (by trial use or processing if necessary) that the goods will be suitable in all respects. (For a full copy of Klobber Ltd Terms and Conditions, please contact the Sales Office.)